

Blue Bin Recycling Guide



Plastics

- Dairy bottles and containers
- Hygiene containers
- Cleaner bottles, laundry bottles
- Plastic cups and water bottles
- *NO plastic grocery bags or stretch plastic (return these to your local grocery store)*



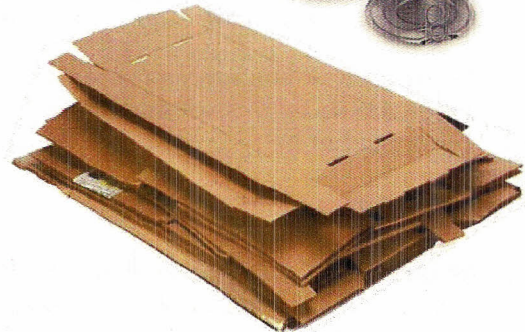
Metal

- Soda cans, metal food cans
- Blinds, siding and frames
- *Keep items small, so that your recycle can lid will close*



Cardboard

- Compact and break down boxes
- Any cardboard without a waxy or plastic coating



Paper

- Newspaper, envelopes (windowed too)
- Food packaging
- Paperback books, magazines, catalogs
- *No foil wrapping paper*



NO Plastic Bags/Stretch Films, Glass, Yard Waste, Clothing, Fabrics, Carpet, Food or Liquids

Recycling Do's and Don'ts



Wasatch Front Waste and Recycling District would like to thank you for your recycling efforts. In 2015, we recycled 45.5 million pounds thanks to you and your efforts. This is a friendly reminder of what goes in your recycle can and what does not.

Put these items in the Blue Cart

- **Mixed paper:** Paper products such as newspapers, magazines junk mail and envelopes, folders, card stock, colored paper, telephone and paperback books.
- **Plastics:** Products such as plastic bottles and containers with numbers (usually on the bottom).



- **Cardboard:** Items such as cereal boxes, beverage cartons, shoe and tissue boxes, paper bags.
- **Aluminum and tin cans**
- **Metals:** Products such as aluminum foil, empty aerosol cans, cookware, scrap copper and brass, metal hangers and non-electronic small appliances.

Household Hazardous Waste (do not put these in either bin)

Lightbulbs (can be dropped off at local libraries), paints or paint cans with paint in them, motor oil, batteries of any kind, medications, any hazardous waste, electronics. Please dispose of these items responsibly. For any questions, please call (385) 468-6325 or visit us at www.wasatchfrontwaste.org.

Do Not put these items in the Blue Cart

- **Glass**
Glass Collection Drop-off Sites:
 - Phillips 66 Gas Station, 6070 Highlight Dr.
 - Scott Ave. Park 3475 S. 800 E.
 - Herriman Fire Station, 5928 W. 13100 South
 - Holladay City Hall, 4580 S. 2300 East
 - Salt Lake Community College, 4386 S. Redwood Rd.
 - Taylorville Park, 1658 W. 4800 South
 - Upper District Park, 3800 S. Wasatch Blvd.
- **Yard Waste:** grass clippings, sod, wood scraps *Green waste carts are available, call 385-468-6325.*
- **Food and liquid waste**
- **Fabrics:** Blankets, towels, pillows, clothing, shoes.
- **Other Waste:** Ceramics and china, **plastic grocery bags (can be dropped off at local grocery stores)**, bubble wrap, packing peanuts, plastic tarps, plastic wrap, diapers, printer and toner cartridges, soiled or dirty paper and tissues, and Styrofoam.